



# The Flame

ISSUE 11-1

FEBRUARY 2011

Chalichelighters@gmail.com

Chalice Lighters  
web site:  
www.tjdistrict.org/  
chalichelighters.html

## CHALICE LIGHTER COMMITTEE

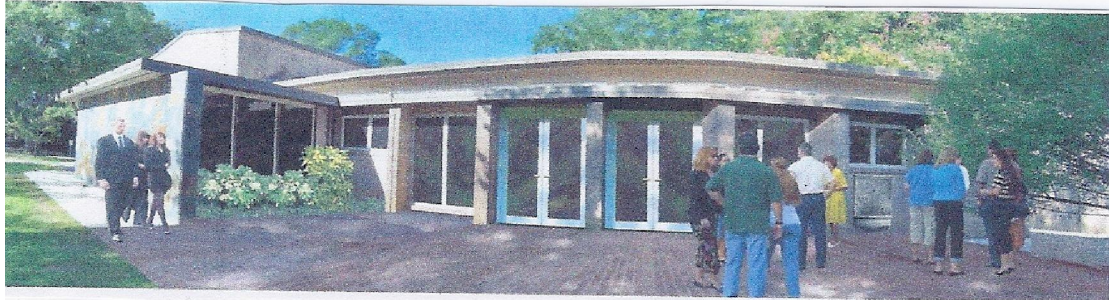
- Linda Bair
- Rev. Mitra Jafarzadeh
- Regina Largent, chair
- Ellen MacMillan

### Application deadlines

- 15 March for the Spring Call (May)
- 15 August for the Fall Call (October)
- 15 November for the Winter Call (February)

TJ District of the UUA  
9704 Mallard Creek Rd. , Charlotte, NC  
28262-9738

## CL grant \$27,000 to UUC Columbia



Once again you provided a congregation with a boost of confidence and a virtual hug of support. The generous gifts of over 1,160 Chalice Lighters will benefit the UU Congregation of Columbia, S.C., as they start Phase I of their renovation to create a more welcoming and more generous space.

## Why do Chalice Lighters help?

Some people join Chalice Lighters because their congregation is seeking a grant, but then years later, they remain stalwart Chalice Lighters. So we asked some people to explain their motivation.

“Why have I been a regular contributor to the Chalice Lighter Fund? Because I want to do my part to see the faith thrive and because my congregation has been the beneficiary!” Aimee Tattersall, UU Congregation of Hillsborough.

“Our liberal message of love and peace is so vital in our world so full of fear and insecurity that we need to find more ways to share our faith! Being a Chalice Lighter has shown amazing results toward this end!” Bonnie Habel, UU Church of Asheville

Quotes from members of the UU Fellowship of Beaufort: Larry Meisner said, “It helps to spread Unitarian Universalism in our district. Jean Stokes replied, “Chalice Lighter grants helps UU con-

gregations grow”

Wayne Moyer sent this quote from a brief presentation made during the Association Sunday service at the Williamsburg Unitarian Universalists. “The Chalice Lighters program is the Unitarian Universalist equivalent of Home Missions, found in every protestant denomination. It is a low cost, effective way to help congregations in the Thomas Jefferson District grow, in depth and number. Dolores and I became Chalice Lighters shortly after joining WUU and continue funding calls because it offers a direct way of spreading our ‘good news.’”

“For about 25 years, I belonged to First UU Church in Richmond. Being a CL was a quick and easy way to be helpful. I was working then, and did not have time to do much volunteering. Now that we are retired, my husband and I do a lot of volunteering and have had to cut back on some of our financial giving....but the CL re-

Continued on back

# *What do Chalice Lighters accomplish?*

In an effort to encourage intentional planning for growth and to experiment with new, modern ways, the criteria for grants are extremely flexible.

The Chalice Lighter Committee encourages applicants to be creative in their plans for growth. Applicants must demonstrate how the projects will grow and strengthen Unitarian Universalism.

## **traditional projects**

Projects that Chalice Lighter grants have been awarded in the TJ District include:

- 1) Assist a congregation to obtain professional ministerial or professional staff.
- 2) Assist a congregation to obtain real estate:
  - Assist a congregation to lease worship, office, meeting or religious education space
  - Assist a congregation to develop plans and/or purchase or construct a new building, or significantly remodel an existing building to accommodate expanding membership, including making the facility handicapped accessible; assist in the purchase of furnishings for a new or expanded facility
  - Assist a congregation to pay for major repair or reconstruction work resulting from a disaster
- 3) Plan for growth
  - Provide funds for the District to engage a growth consultant, or other program staff which would promote growth of Unitarian Universalism within the TJD
  - Provide funds to the District to start a congregation
  - Provide funds for scholarships to support congregation leaders in attending growth conferences or to present leadership development workshops
  - Provide funds for the District to present seminars and workshops on growth
  - Assist a congregation to launch a youth, young adult or adult program specifically directed at attracting new members

## **new growth ideas**

However, Chalice Lighters grants may help growth in many other ways. For example, here are some ideas that have been successful for Chalice Lighter Programs in other districts.

1) Assist a congregation launching an outreach program to enhance the diversity in congregation. Some districts, including TJD, have used grants to start or help congregations in areas which are underserved by UU congregations. Others CL groups have helped existing congregations reach out to historically marginalized groups.

2) Assist a congregation, or group of congregations, or the District to launch an information or advertising program, including developing or improving websites.

3) Assist a congregation to launch a mission outreach project in the local community, including satellite or branch church or video broadcasting of program(s).

The CL Committee hopes that TJD Chalice Lighters will continue to embrace these innovative growth ideas.

If you have ideas or have concerns, please let the Committee know by emailing or writing us. We will also be available at the District Annual

## **Why do CLs help continued**

quests are infrequent and the amount I give is small, so I can handle it, quickly and easily.” Fran Green, UU Congregation of the Outer Banks

One memorable quote from a UUC-Greensboro Chalice Lighter Sunday touted being a Chalice Lighter as the closest thing to being an evangelist that many of us UUs get to be.

So, why are you a Chalice Lighter? Have you shared the Chalice Lighter program and your reasons with members of your church community? Share the story and get your friends to help us spread the light.